

1- Which are your top livability criteria?

- a. Environment
- b. Political stability
- c. economy
- d. Housing
- e. Health care

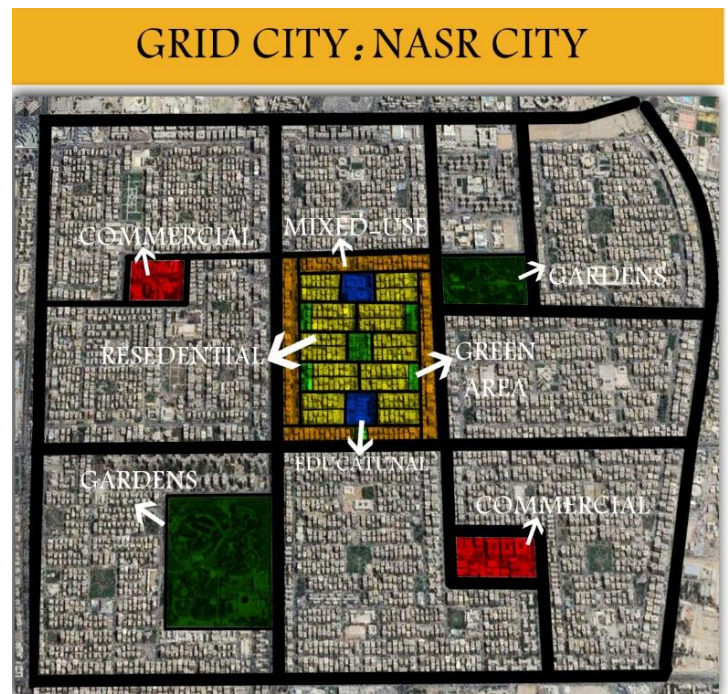
2- Why do we live where we live?

I live in Nasr city district, Cairo governorate, Egypt. And the reason why I live here is the following

a. Housing

The reason why the housing is considered an advantage here is that streets are well planned and there is a fair amount of green areas around the district varying between small gardens that are overlooked by the buildings, and large ones that are between neighborhoods.

Also the variation of land uses between residential, commercial and services made it easier to live in.



THIS PART OF CAIRO IS DESIGNED AS A GRID, IT STARTED TO FROM DURING THE EARLY SIXTEES.

THE MAP SHOWS THE PLANED DISTRIBUTION OF LANDUSES AND THAT EACH GRID CONTAINS THE SAME USES AS SHOWN IN THE MIDDLE BLOCK MIXED USE ON MAIN STREETS, RESEDINTIAL ON THE INSIDE ,TWO SCHOOLS AND PORTIONS OF GREEN AREAS

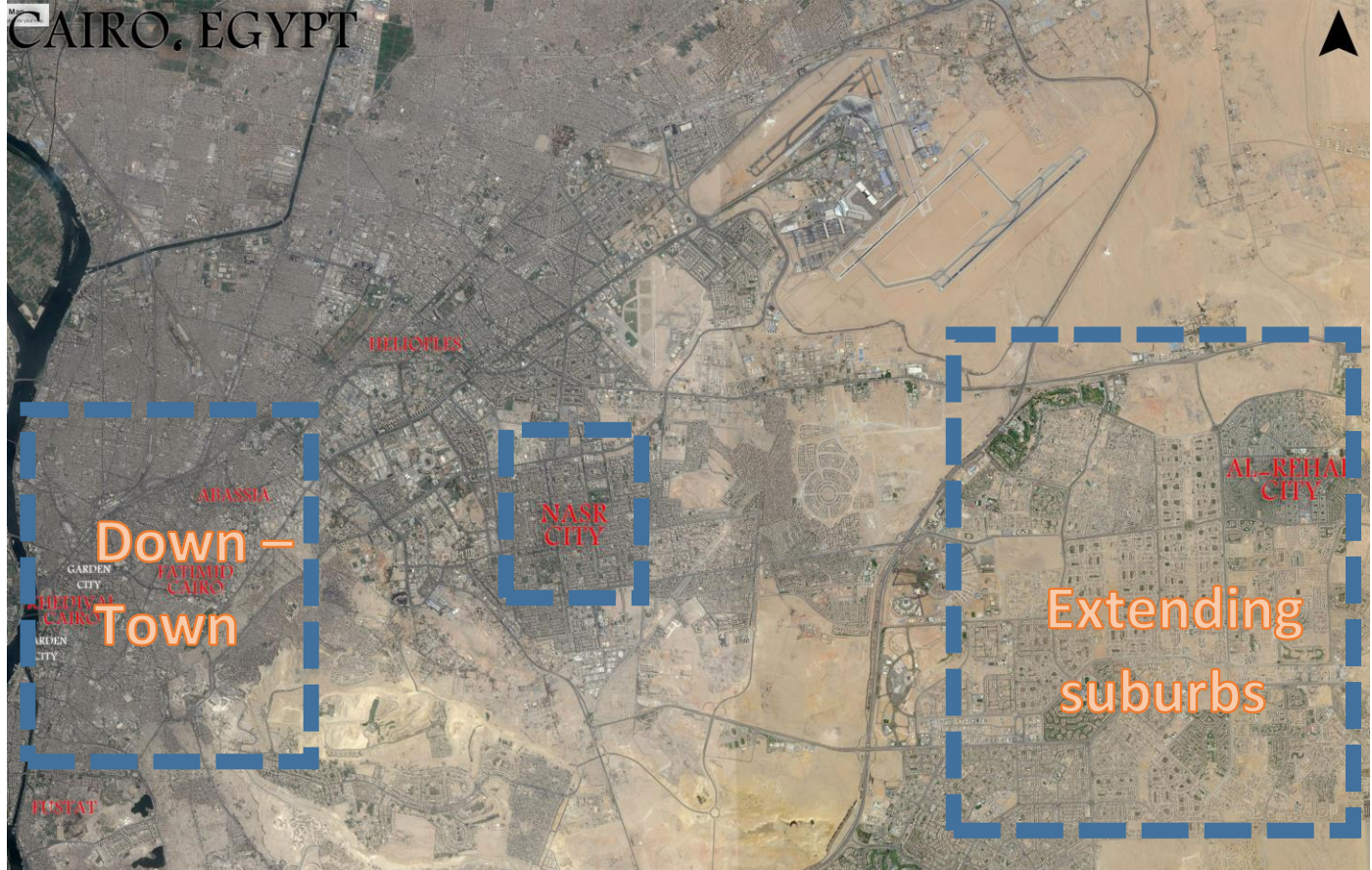
b. Infrastructure

You can hardly find problems in the infrastructure of Nasr city compared to other districts and in Cairo overall compared to other governorates, where in other places where electricity and water can be cut off for more than 3 hours, twice a day which is unbearable.

c. Transportation

Cairo is Egypt's capital which makes it on the national wise connected to all other cities through routes and train station and internationally through Cairo's airport.

Nasr city on the other hand is very close to downtown, a 30 minutes' drive which make it almost in the center between downtown on one hand and the extending suburbs on the other hand.



d. Opportunities

The possibility of finding work, interns, fun is higher in the capital than any other place around Egypt which make it a high source of attraction to people.

e. Healthcare

Specialized hospitals are all around Cairo that people come to from the countryside and from other cities

3- To what extent does your own place of residence fulfill your ideal livability criteria?

- 1- Environment - 30
- 2- Political stability - 20
- 3- Economy – 20
- 4- Housing – 60
- 5- Health care – 50

General 30

4- What would you change?

- 1- The access to public spaces should be open for free for the citizens of the neighborhood surrounding the green areas.
- 2- Encourage public spaces to be more socially attractive.
- 3- Pedestrians routes need to be more prepared and friendly.
- 4- Trees should not be cut and the planting of useful trees should be encouraged.
- 5- Public transportation should be well planned in order to decrease the amount of traffic.
- 6- Ecofriendly means should be used to decrease the amount of pollution and to avoid the increase in temperature that is caused through immersive use of electrical devices in buildings.

5- Why do we move?



Figure 1 copy writes reserved



- 1- Away from noise
- 2- Environmentally clean
- 3- Source of relaxation – The sea
- 4- Less noises – less traffic – less source of pollution

- 5- Socially - friendly
- 6- Culture and history
- 7- Opportunities - Europe